

CASTLE ESTATES

1982

A RARE OPPORTUNITY TO PURCHASE A MOST SUBSTANTIAL VICTORIAN PROPERTY WITH COMMERCIAL ROOMS AND COMMERCIAL ACCOMMODATION WITH AMPLE OFF ROAD PARKING AS WELL LARGE RESIDENTIAL LIVING SPACE



SPA VILLA LEICESTER ROAD HINCKLEY LE10 1LW

Offers Over £550,000

- Impressive Entrance To Large Residential Accommodation
- Large Open Plan Breakfast/Living Area
- Four Good Sized Bedrooms
- Private Entrance To Private Office/Workshop Area
- Ample Off Road Parking
- Attractive Lounge & Separate Sitting Room
- Luxury Fitted Kitchen
- Luxury Family Bathroom
- Separate Two Storey Annexe Living Accommodation
- Sought After Town Centre Location



112 Castle Street, Hinckley, Leicestershire. LE10 1DD

info@castles-online.co.uk - 01455 617997

www.castles-online.co.uk



VIEWING

By arrangement through the Agents.

DESCRIPTION

A rare opportunity to purchase one of Hinckley's most prestigious Victorian buildings standing on the corner off Leicester Road and Spa Lane. Formerly the local registry office and has had various uses over the years including purely residential. The property currently has commercial planning permission which could be converted back to residential (subject to local planning consents).

It is situated within close proximity of Hinckley town centre with its shops, schools and amenities. Those wishing to commute will find easy access to the A47, A5 and M69 junctions making travelling to further afield excellent.

The accommodation boasts an impressive entrance hall, two large reception rooms, further L shaped breakfast/living area and a contemporary fitted kitchen. To the first floor there are four good sized bedrooms, luxury family bathroom and a separate w.c. Outside there is ample off road parking. Work room and work shop leading private two storey annexe.

More specifically the well planned, gas fired centrally heated and double glazed accommodation comprises:

ENTRANCE HALL

16'0" x 5'10" (4.9m x 1.8m)

having original front door with coloured leaded lights, designer central heating radiator and ceramic tiled flooring. Spindle balustraded staircase to the first floor landing.

LOUNGE

15'1" x 13'9" (4.6m x 4.2m)

having original feature fireplace with carved surround, tiled hearth and open fire facility, original coved ceiling with central rose, central heating radiator and upvc double glazed bay window with vertical blinds and panelling beneath.



LOUNGE



SITTING ROOM

15'1" x 11'9" (4.6m x 3.6m)

having upvc double glazed bay window with vertical blinds and panelling beneath, feature wood fireplace, original plaster covered ceiling with ceiling rose and central heating radiator.

L SHAPED BREAKFAST/LIVING AREA

23'11" x 21'3" (7.3m x 6.5m)

having contemporary living flame gas fire, two central heating radiators, feature archway, plaster covered ceiling, LED lighting and Amtico style light grey wood effect flooring. Steps down to Cellar. Upvc double glazed patio doors opening onto the side and rear gardens.



L SHAPED BREAKFAST/LIVING AREA



CELLAR

14'5" x 11'5" (4.4m x 3.5m)

having single drainer stainless steel sink, space and plumbing for washing machine, pump for water/drainage.

KITCHEN

16'4" x 15'1" (5m x 4.6m)

having an attractive range of cream shaker style units including base units, drawers and wall cupboards with under lighting, matching granite effect grey work surfaces and ceramic tiled splashbacks, inset single drainer stainless steel sink with mixer tap and rinser bowl, peninsular unit, built in four ring induction hob with extractor hood over, space and plumbing for dishwasher, Aga with two ovens, extractor over and lighting, gas fired boiler for central heating, central heating radiator, coved ceiling, inset LED lighting and tv aerial point.



KITCHEN



KITCHEN



FIRST STUDY FLOOR LANDING

27'10" x 5'10" (8.5m x 1.8m)

having designer central heating radiator, feature balustrading, windows to the front and rear.

MASTER BEDROOM

15'1" x 13'9" (4.6m x 4.2m)

having twin windows, designer central heating radiator and further central heating radiator.



MASTER BEDROOM



BEDROOM TWO

15'5" x 12'1" (4.7m x 3.7m)

having double built in wardrobe and central heating radiator.

BEDROOM THREE

14'9" x 14'9" (4.5m x 4.5m)

having designer central heating radiator and upvc double glazed French doors opening onto roof area.

BEDROOM FOUR

15'1" x 7'10" (4.6m x 2.4m)
having central heating radiator.

SEPARATE W.C.

having low level w.c., pedestal wash hand basin, mirror and shaver point.

FAMILY BATHROOM

10'5" x 7'10" (3.2m x 2.4m)
having double ended bath with mixer tap, vanity unit with wash hand basin, integrated w.c., double shower cubicle with electric shower over, panelled radiator, vinyl slate effect flooring, LED lighting and built in gas fired boiler.



SECOND FLOOR LANDING

having feature balustrading.

ATTIC ROOM

19'8" x 15'5" (6m x 4.7m)
being boarded.

ATTIC ROOM

17'0" x 13'9" (5.2m x 4.2m)

ANNEXE - ENTRANCE HALL

10'5" x 3'3" (3.2m x 1m)
having composite outer door, vinyl flooring and central heating radiator. Double doors to Work Room.

ANNEXE - W.C.

having integrated low level w.c. and vanity unit with wash hand basin and hot water cylinder and immersion heater.

ANNEXE - WORK ROOM

15'8" x 12'5" (4.8m x 3.8m)
having central heating radiator and vinyl flooring. Steps down to Work Shop.

ANNEXE - WORK SHOP

16'4" x 9'10" (5m x 3m)

having double doors, LED lighting, hot and cold water, built in gas fired boiler. Door to Rear Entrance Hall.

ANNEXE LIVING SPACE - HALL

9'2" x 5'10" (2.8m x 1.8m)

having central heating radiator.

ANNEXE LIVING SPACE - SHOWER ROOM

having fully tiled shower cubicle, low level w.c. and pedestal wash hand basin.

ANNEXE LIVING SPACE - STAIRCASE

having staircase.

ANNEXE LIVING SPACE - LIVING KITCHEN

25'3" x 12'5" (7.7m x 3.8m)

having feature beamed ceiling and central heating radiator. KITCHETTE AREA having base unit and sink with mixer tap and access to the roof space.

OUTSIDE


There is direct vehicular access from Spa Lane through secure gates leading to ample parking over a block paved driveway.




OUTSIDE



Energy Efficiency Rating

	Current	Potential
<i>Very energy efficient - lower running costs</i>		
(92 plus) A		
(81-91) B		
(69-80) C		
(55-68) D		
(39-54) E		
(21-38) F		
(1-20) G		
<i>Not energy efficient - higher running costs</i>		
England & Wales	EU Directive 2002/91/EC	

Environmental Impact (CO₂) Rating

	Current	Potential
<i>Very environmentally friendly - lower CO2 emissions</i>		
(92 plus) A		
(81-91) B		
(69-80) C		
(55-68) D		
(39-54) E		
(21-38) F		
(1-20) G		
<i>Not environmentally friendly - higher CO2 emissions</i>		
England & Wales	EU Directive 2002/91/EC	

Energy Efficiency Rating		Current	Potential
Very energy efficient - lower running costs			
(92 plus) A			
(81-91) B			
(69-80) C			
(55-68) D			
(39-54) E			
(21-38) F			
(1-20) G			
Not energy efficient - higher running costs			
England & Wales		EU Directive 2002/91/EC	

Environmental Impact (CO ₂) Rating		Current	Potential
Very environmentally friendly - lower CO ₂ emissions			
(92 plus) A			
(81-91) B			
(69-80) C			
(55-68) D			
(39-54) E			
(21-38) F			
(1-20) G			
Not environmentally friendly - higher CO ₂ emissions			
England & Wales		EU Directive 2002/91/EC	

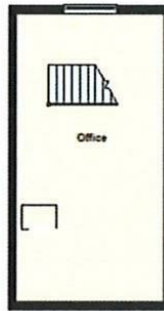
Ground Floor

Approx. 159.1 sq. metres (1632.2 sq. feet)



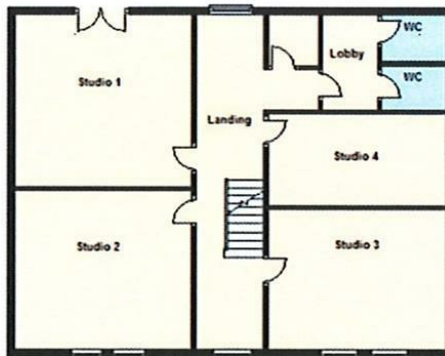
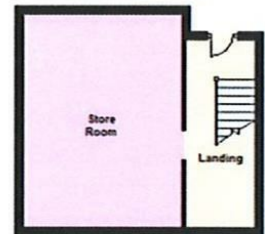
First Floor

Approx. 122.8 sq. metres (1319.2 sq. feet)



Second Floor

Approx. 31.7 sq. metres (341.8 sq. feet)



PLEASE NOTE

These particulars are produced in good faith as a general guide only and do not constitute any part of a contract. Intending purchasers should make their own inspection and enquiries in order to satisfy themselves of their authenticity and no responsibility is accepted for any errors or omissions herein. No person in the employment of Castle Estates has any authority to make any representation or warranty in relation to this property.

FIXTURES AND FITTINGS

Specifically excluded unless mentioned in these details but may be available by separate negotiation if required. Telephones and points (where fitted) are subject to the service providers regulations.

OFFER PROCEDURE

As we have an obligation to our Vendor Client to ensure that any offers made for this property can be substantiated one of our financial services representatives will contact you to qualify your offer.

ADDITIONAL NOTES

Whilst we endeavour to make our sales particulars accurate and reliable, if there is any point which is of particular importance to you please contact the office and we will be please to check the information for you. The agent has not tested any apparatus, equipment, fittings or services and so cannot verify they are in working order. The buyer is advised to obtain verification from the solicitor or surveyor. All measurements quoted are approximate and are for guidance purposes only. Purchasers are advised to check all measurements critical to requirements.

BUSINESS HOURS

Monday to Friday 9.00 am till 5.30 pm & Saturday 9.00 am to 12.00 pm
